

Materials Required:

1. Download the [Dream Machine template](#) and print it out. The template is 37" x 33" and can be printed at a print shop.
2. 78 RPM Turntable
3. Suspended lightbulb with a 15 - 50 watt bulb
4. Scissors
5. Glue

Instructions:

1. Cut out the shape of the Dream Machine by following the solid stroke.
2. Cut out the holes inside the Dream Machine by following the dashed strokes.
3. Roll the Dream Machine into a tube and overlap the glue tabs. Position the glue tabs on the inside surface of the Dream Machine and glue in place.
4. Place the Dream Machine on a 78 RPM turntable
5. Suspend a light bulb $\frac{1}{3}$ - $\frac{1}{2}$ down the inside of the Dream Machine. The lightbulb should be positioned in the center of the tube.
6. Sit in front of the Dream Machine, close your eyes, and wait for the visions to come!

WARNING: This experience may be hazardous to people with epilepsy or other nervous disorders.

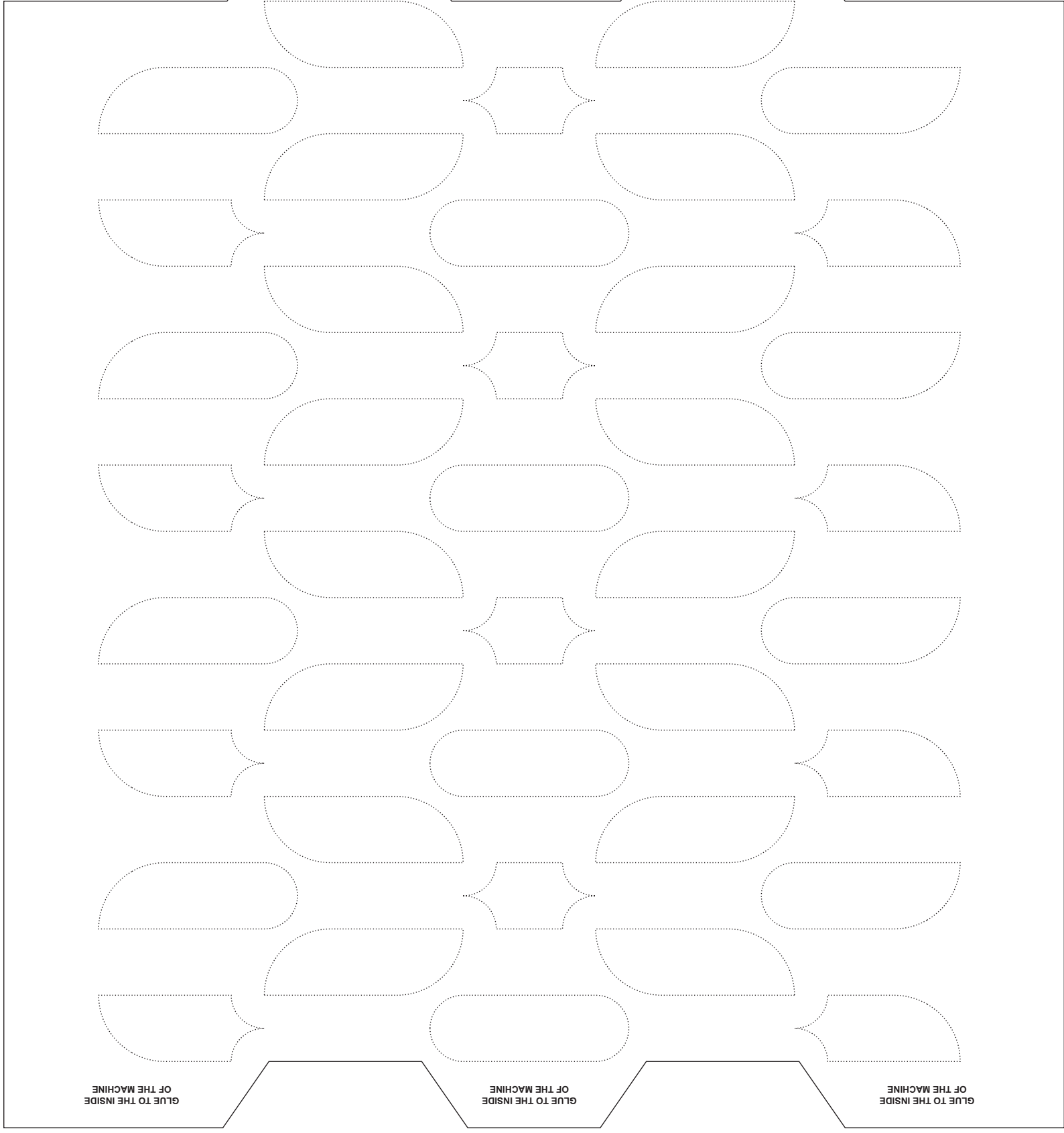
Instructions:
1. Cut out the shape of the Dream Machine by following the solid stroke.
2. Cut out the holes inside the Dream Machine by following the dashed strokes.
3. Roll the Dream Machine into a tube and overlap the glue tabs. Position the glue tabs on the inside surface of the Dream Machine and glue in place.
4. Place the Dream Machine on a 78 RPM turntable.
5. Suspend a light bulb 1/2 - 1" over the inside of the Dream Machine. The lightbulb should be positioned in the center of the tube.
6. Sit in front of the Dream Machine, close your eyes, and wait for the visions to come!

WARNING: This experience may be hazardous to people with epilepsy or other nervous disorders

**GLUE TO THE INSIDE
OF THE MACHINE**

**GLUE TO THE INSIDE
OF THE MACHINE**

Flicker
A Film By **Nik Sheehan**
Visit the official website at flickerflicker.com



**GLUE TO THE INSIDE
OF THE MACHINE**

**GLUE TO THE INSIDE
OF THE MACHINE**

**GLUE TO THE INSIDE
OF THE MACHINE**